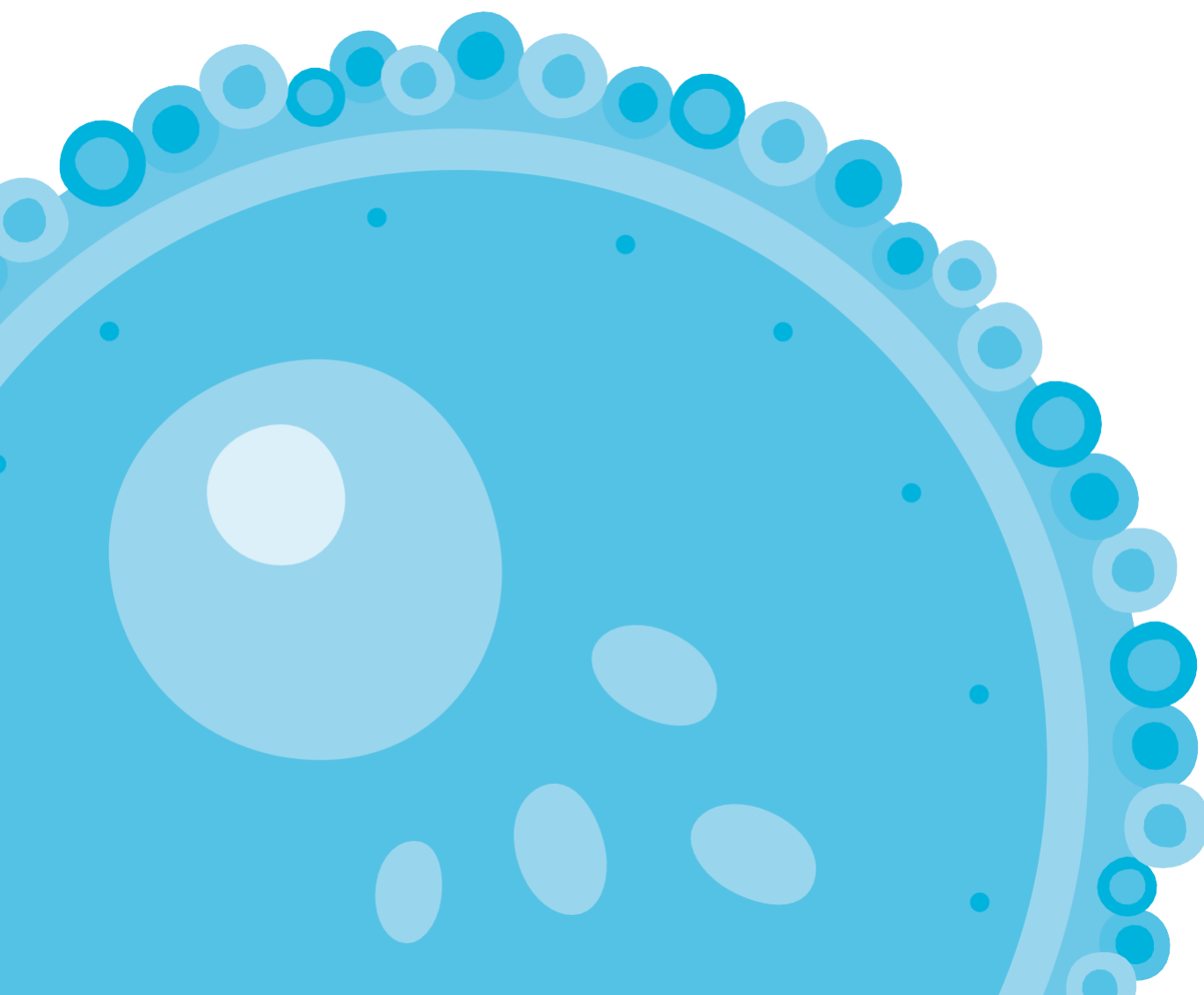


# North Central London Fertility Policies Review

## Patient Leaflet



## About North Central London Clinical Commissioning Group (NCL CCG)

North Central London Clinical Commissioning Group (NCL CCG) plans and pays for a wide range of health and care services across Barnet, Camden, Enfield, Haringey and Islington. NCL CCG was formed in April 2020, bringing together the CCGs of the five boroughs.

NCL CCG is responsible for commissioning services and treatments that best meet the needs of our local population. We are also responsible for developing a range of policies, some related to specific services. In developing policies, we consider guidelines, latest clinical and scientific evidence, and the views of local clinicians, patients and service users.

We carefully consider how to make the best use of our NHS budget to deliver the best health and care outcomes for all residents. This sometimes means making difficult decisions on how to allocate funding. When one of our policies does not fully align with national guidance, or does not offer unlimited access to treatments, we will always explain the basis for this decision.

## Fertility Medicines and Treatments

There are a range of medicines and treatments available that can help people to conceive, many of which are NHS-funded. Some are provided via a person's GP and some from fertility clinics.

Everyone's fertility 'journey' will differ depending on personal circumstances. However, many people start by speaking to their GP - who may undertake, or refer a person or couple for, initial investigations. These can include blood tests, sperm-testing and scans.

A couple or individual may be referred by their GP to a fertility clinic (usually based at a local hospital) that can prescribe medicines and offer a range of treatments. One of the most widely known treatments is in vitro fertilisation (IVF) but, in fact, only a small proportion of people who have difficulty conceiving will need a treatment such as IVF.

## North Central London Fertility Policies

Most CCGs in England have a fertility policy. Typically, this policy will set out:

- Which fertility treatments (e.g. IVF, intrauterine insemination) and other services (e.g. sperm washing for men living with HIV, freezing of eggs, sperm or embryos for people undergoing treatment that may affect their future fertility) funded by the NHS to patients in that area; and
- The eligibility criteria patients must meet to receive be referred for these fertility treatments (e.g. age, smoking status).

In North Central London, there are five fertility policies in place - one for Barnet, Camden, Enfield, Haringey and Islington. This is because, before the formation of NCL CCG, each CCG had its own policy. These can be found on our website:

[www.northcentrallondonccg.nhs.uk/fertilitypolicies](http://www.northcentrallondonccg.nhs.uk/fertilitypolicies)

Each of our fertility policies outlines treatments we fund, and eligibility criteria for these, in each borough. Treatments covered include:

- In vitro fertilization (IVF) with or without intracytoplasmic sperm injection (ICSI)
- Intrauterine insemination (IUI)
- Assisted conception treatments (for example, IVF or IUI) using donated eggs or sperm
- Fertility preservation for patients who are about to have medical treatment such as chemotherapy that will affect their future fertility (egg, embryo or sperm storage)
- Surgical sperm retrieval
- Sperm washing (for people with blood borne viruses such as HIV)
- Assisted conception treatments involving surrogates.

NCL CCG commissions four NHS Trusts to provide these services and treatments. Residents that are eligible will be referred by their GP to one of these Trusts, depending on the borough they live in:

- Homerton University Hospital NHS Foundation Trust
- University College London Hospitals NHS Foundation Trust
- Imperial College Healthcare NHS Trust
- Guy's and St Thomas' NHS Foundation Trust

## Developing a single NCL CCG Fertility Policy

Our current Fertility Policies were developed a number of years ago by the CCG in each borough, and there are some variations between the five policies. Now we have formed one NCL CCG, we have commenced work to develop one new fertility policy for Barnet, Camden, Enfield, Haringey and Islington.

This will be done in two stages:

1. The first stage is the NCL CCG Fertilities Policy Review. No decisions will be taken at this stage, but a set of recommendations will be developed.
2. The second stage will be the development of the policy. The recommendations from the Review will inform the final policy.

A Steering Group has formed to lead the NCL CCG Fertilities Policies Review. The Group has a clinical Chair, and its membership includes other clinicians, commissioners and two Community Members (a resident and a representative from the Fertility Network UK).

We will also seek the views of local NHS specialists and clinicians (e.g. GPs), residents and fertility service users, local Healthwatch and a range of other organisations in each borough.

The Review will look at:

- Latest scientific literature, clinical evidence and best practice
- National guidance, and other CCG policies
- North Central London data - estimated number of patients experiencing fertility problems and accessing fertility treatments, types of treatments accessed, outcomes data for the clinics used by our populations, expenditure by the CCG
- The potential impact of changing policies for residents in our boroughs, especially for protected characteristics groups (defined by the Equality Act 2010).

## Sharing your views: 10 May - 9 July 2021

We are keen to hear from residents, fertility service users, voluntary and community groups, fertility groups and others. The engagement period for the Review will run from 10 May to 9 July 2021.

Your views on the current policies, and what you think we should consider in developing a new policy, will help to inform the recommendations produced by the Review.

Due to the coronavirus pandemic, in line with national guidance, we will not be hosting face to face meetings. However, you can contribute your views and experiences in the following ways:

### Questionnaire

A questionnaire is available on the NCL CCG website:  
[www.northcentrallondonccg.nhs.uk/fertilitypolicies](http://www.northcentrallondonccg.nhs.uk/fertilitypolicies)

If you need assistance completing this questionnaire or would like to request a hard copy version is sent to you, please email: [nclccg.fertility-review@nhs.net](mailto:nclccg.fertility-review@nhs.net)

You can complete and return a hard copy of the questionnaire via freepost. Please address your envelope to: **Freepost NCL FERTILITY POLICIES**

### Public meetings (online)

We will be hosting three online meetings open to anyone living in Barnet, Camden, Enfield, Haringey or Islington. At the events, the CCG will share information about the Fertility Policies Review and seek your views to inform the Review.

To register to attend one of these events, please visit: <https://www.eventbrite.ca/o/north-central-london-clinical-commissioning-group-33292085627>.

- Thursday 27 May, 14:00 - 15:30
- Saturday 12 June, 11:00 - 12:30
- Thursday 24 June, 17:00 - 18:30

### Invite us to join a meeting

The CCG is happy to come along to discuss the Review at any meetings or events happening across North Central London, for example, local Fertility Support Groups or GP Patient Participation Groups etc. To invite us to join a meeting please email: [nclccg.fertility-review@nhs.net](mailto:nclccg.fertility-review@nhs.net)

### Any questions

If you have any questions about the Fertility Policies Review, you can email these to: [nclccg.fertility-review@nhs.net](mailto:nclccg.fertility-review@nhs.net)

### Q1. What are your views on the current Fertility Policies?

### Prompts:

In providing feedback on this question, you may want to consider:

- The eligibility criteria set out in (any of) the current policies
- The treatments offered under (any of) the current policies
- Any of the other services covered by the policies

You may also want to share:

- Any experience of being referred / accessing fertility treatment under the NHS

## Q2. What should we consider when developing the new Fertility Policy?

### Prompts:

In providing feedback on this question, you may want to consider:

- The eligibility criteria the new policy should or should not include
- The range of treatments / interventions that should or should not be included
- What you think we could improve when we develop the new policy
- What you think we should include or remove when we develop the new policy

We would also welcome your views on:

- Access to fertility treatments for North Central London patients
- Availability of helpful, easy to understand information
- How the CCG should involve local people in developing the new policy

### Q3. In what capacity are you responding to this survey?

✔ Please tick one option

- ☐ Current or former patient/service user
- ☐ Member of the public
- ☐ Voluntary organisation/charity
- ☐ Staff who provide fertility services
- ☐ Health or care professional / member of NHS staff
- ☐ Trade union or professional body
- ☐ Other public body / stakeholder / political representative
- ☐ Prefer not to say

### Q4. If you are responding as a representative of an organisation, please state the organisation's name

.....

## About you

North Central London CCG is committed to ensuring everyone has the chance to participate fully in the activities and decisions of the organisation. By completing the following section you will help us to understand who we are reaching and how to better serve everyone in our community. This allows us to use your answers to see the impacts our proposals may have on different groups in our community.

✔ Please tick one option for each question. All responses remain anonymous.

### Q5. Please state the borough that you live in

.....

### Q6. Which age group are you in?

- |   |                               |
|---|-------------------------------|
| <input type="radio"/> 16 - 18           | <input type="radio"/> 19 - 24 |
| <input type="radio"/> 25 - 34           | <input type="radio"/> 35 - 44 |
| <input type="radio"/> 45 - 54           | <input type="radio"/> 55 - 64 |
| <input type="radio"/> 65 - 79           | <input type="radio"/> 80+     |
| <input type="radio"/> Prefer not to say |                               |

### Q7. Which of the following options best describes how you think of yourself?

- ☐ Female (including trans woman)
- ☐ Male (including trans man)
- ☐ Non-binary
- ☐ In another way
- ☐ Prefer not to say

### Q8. Is your gender identity the same as the gender you were given at birth?

- ☐ Yes
- ☐ No
- ☐ Prefer not to say

### Q9. Do you consider yourself to have a disability?

Definition of disability under the Equality Act 2010: if you have a physical or mental impairment that has a 'substantial' and 'long-term' negative effect on your ability to do normal daily activities.

- ☐ Yes
- ☐ No
- ☐ Prefer not to say

**Q10. Please select what you consider your ethnic origin to be.**

Ethnicity is distinct from nationality.

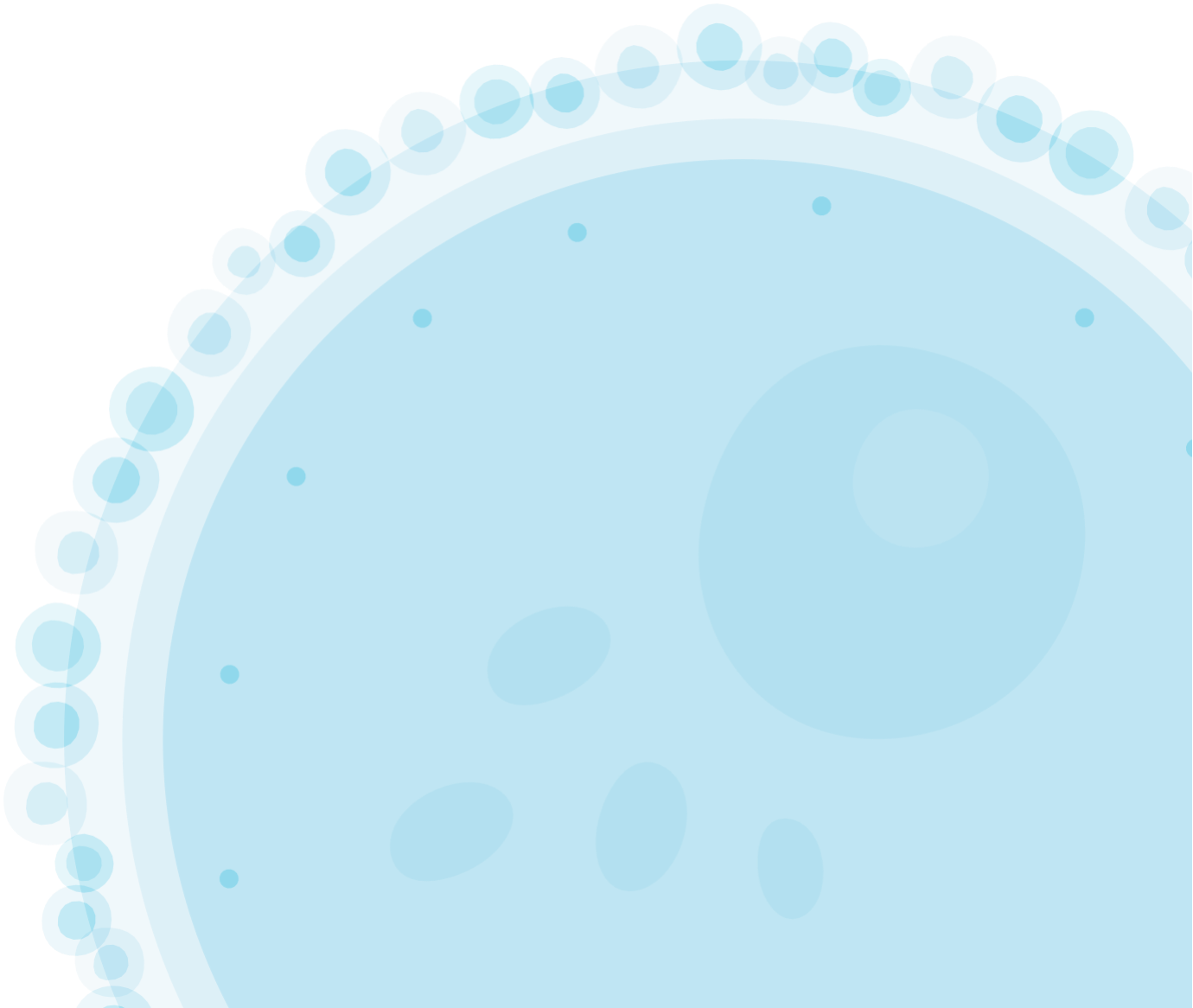
- ☐ White: Welsh/English/Scottish/  
Northern Irish/British
- ☐ White: Irish
- ☐ White: Gypsy or Irish Traveller
- ☐ White: Any other White background
- ☐ Mixed: White and Black Caribbean
- ☐ Mixed: White and Black African
- ☐ Mixed: White and Asian
- ☐ Mixed: Any other mixed background
- ☐ Asian/Asian British: Indian
- ☐ Asian/Asian British: Pakistani
- ☐ Asian/Asian British: Bangladeshi
- ☐ Asian/Asian British: Any other Asian background
- ☐ Black or Black British: Black - Caribbean
- ☐ Black or Black British: Black - African
- ☐ Black or Black British: Any other Black background
- ☐ Other ethnic background: Chinese
- ☐ Other ethnic background: Any other ethnic group
- ☐ Prefer not to say

**Q11. Please indicate which option best describes your religion or belief.**

- ☐ No religion
- ☐ Christian
- ☐ Jewish
- ☐ Sikh
- ☐ Any other religion
- ☐ Buddhist
- ☐ Hindu
- ☐ Muslim
- ☐ Atheist
- ☐ Prefer not to say

**Q12. Please indicate the option which best describes your sexual orientation.**

- ☐ Heterosexual
- ☐ Gay
- ☐ Lesbian
- ☐ Bisexual
- ☐ None of the above
- ☐ Prefer not to say



If you would like to be kept up to date with the progress of the Review, please tell us your email address.

(Please note, this will be kept confidential and separated before analysis of your comments.)

Email address: .....

If you would like more information on the North Central London Fertility Policies Review or if you would like this leaflet translated contact: [nlccg.fertility-review@nhs.net](mailto:nlccg.fertility-review@nhs.net)

إن كنت ترغب في الحصول على مزيد من المعلومات  
حول مراجعة سياسات الخصوبة في شمال وسط لندن أو  
تدرب في ترجمة هذه النشرة، فأتصل بـ:  
[nlccg.fertility-review@nhs.net](mailto:nlccg.fertility-review@nhs.net)

যিদি আপিন বৰ্থ সেন্দ্ৰাল লন্ডন  
ফাৰ্টিলিটি পলিসিজ ৰিভিউ ( North  
Central London Fertility Policies  
Review) সম্পৰ্কে আৱা বেষী তথ্য  
জানেত চান বা যিদি আপিন এই  
দেখতে চান তাহেল  
প্রচারপত্ৰটি  
অনুদিত

[nlccg.fertility-review@nhs.net](mailto:nlccg.fertility-review@nhs.net)  
ওয়েবসাইটৰ মাধ্যমে যোগাযোগ  
কৰুন

W celu uzyskania dodatkowych informacji  
na temat przeglądu polityki North Central  
London w zakresie płodności lub w celu  
przetłumaczenia niniejszej ulotki prosimy o  
kontakt: [nlccg.fertility-review@nhs.net](mailto:nlccg.fertility-review@nhs.net)

Haddii aad jeclaan lahayd macluumaad  
dheeri ah oo ku saabsan Dib-u-eegista  
Siyaasadaha Taranka ee Bartamaha  
Waqooyiga London (North Central  
London) ama haddii aad jeclaan lahayd in  
waraaqdan lagu turjumo la xiriir:  
[nlccg.fertility-review@nhs.net](mailto:nlccg.fertility-review@nhs.net)

Si desea obtener más información sobre  
la revisión de las políticas de fertilidad del  
centro norte de Londres o si desea este

folleto traducido, póngase en contacto con:

[nlccg.fertility-review@nhs.net](mailto:nlccg.fertility-review@nhs.net)

Kuzey Merkez Londra Doğurganlık  
Politikaları İncelemesi hakkında daha fazla  
bilgi almayı veya bu broşürün tercüme  
edilmesini isterseniz, şu adres üzerinden  
iletişime geçin:  
[nlccg.fertility-review@nhs.net](mailto:nlccg.fertility-review@nhs.net)

